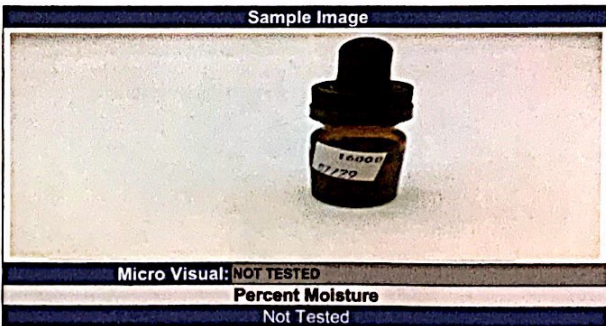
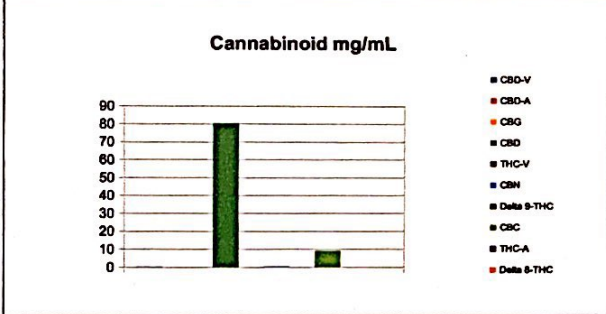
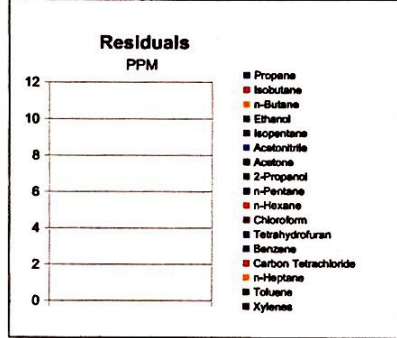


| Sample Information     |                         |           |       |
|------------------------|-------------------------|-----------|-------|
| Sample Identification  | Kooodegras Platinum Oil |           |       |
| Laboratory Number      | 2019016000              |           |       |
| Batch Number           | 6-8-0002                |           |       |
| Matrix                 | Oil                     |           |       |
| Analyzed Date          | 07/30/19                |           |       |
| Extraction Date        | 07/30/19                |           |       |
| Cannabinoid (HPLC)     | mg/mL                   | mg/Bottle | %     |
| Compound               |                         |           |       |
| CBD-V                  | 0.09                    | NA        | 0.01% |
| CBD-A                  | ND                      | NA        | ND    |
| CBG                    | ND                      | NA        | ND    |
| CBD                    | 80.23                   | NA        | 8.01% |
| THC-V                  | ND                      | NA        | ND    |
| CBN                    | 0.41                    | NA        | 0.04% |
| Delta 9-THC            | ND                      | NA        | ND    |
| CBC                    | 9.12                    | NA        | 0.91% |
| THC-A                  | ND                      | NA        | ND    |
| Delta 8-THC            | ND                      | NA        | ND    |
| Cannabinoids Total     |                         |           |       |
| Max Active THC         | ND                      | NA        | ND    |
| Max Active CBD         | 80.23                   | NA        | 8.01% |
| T. Active Cannabinoids | 89.85                   | NA        | 8.97% |
| Total Cannabinoids     | 89.85                   | NA        | 8.97% |

| Max Active Ratios |  |  |  |
|-------------------|--|--|--|
| NA:1 CBD to THC   |  |  |  |
| ND:1 THC to CBD   |  |  |  |



| RS (GCMS-MS)         | PPM | RL   |
|----------------------|-----|------|
| Compound             |     |      |
| Propane              | NT  | 5.0  |
| Isobutane            | NT  | 5.0  |
| n-Butane             | NT  | 5.0  |
| Ethanol              | NT  | 5.0  |
| Isopentane           | NT  | 5.0  |
| Acetonitrile         | NT  | 5.0  |
| Acetone              | NT  | 50.0 |
| 2-Propanol           | NT  | 5.0  |
| n-Pentane            | NT  | 5.0  |
| n-Hexane             | NT  | 5.0  |
| Chloroform           | NT  | 5.0  |
| Tetrahydrofuran      | NT  | 5.0  |
| Benzene              | NT  | 5.0  |
| Carbon Tetrachloride | NT  | 5.0  |
| n-Heptane            | NT  | 5.0  |
| Toluene              | NT  | 5.0  |
| Xylenes              | NT  | 10.0 |



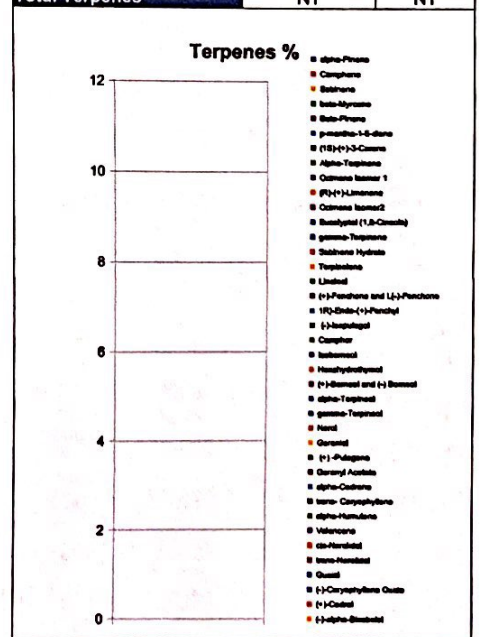
|                                |    |
|--------------------------------|----|
| mL/Bottle                      | NA |
| mg THC/Bottle                  | NA |
| mg CBD/Bottle                  | NA |
| (mg) total cannabinoids/bottle | NA |

| Metals   | PPM | RL    |
|----------|-----|-------|
| Compound |     |       |
| Lead     | NT  | 0.018 |
| Arsenic  | NT  | 0.007 |
| Cadmium  | NT  | 0.004 |
| Mercury  | NT  | 0.020 |

| Microbial          | CFU/g |
|--------------------|-------|
| Compound           |       |
| Enterobacteriaceae | NT    |
| Coliform           | NT    |
| E. coli            | NT    |
| Aerobic            | NT    |
| Yeast              | NT    |
| Mold               | NT    |



| Terpane (GC-MS)                | mg/mL | mg/Bottle |
|--------------------------------|-------|-----------|
| Compound                       |       |           |
| alpha-Pinene                   | NT    | NT        |
| Camphene                       | NT    | NT        |
| Sabinene                       | NT    | NT        |
| beta-Myrcene                   | NT    | NT        |
| Beta-Pinene                    | NT    | NT        |
| p-mentha-1,5-diene             | NT    | NT        |
| (1S)-(+)-3-Carene              | NT    | NT        |
| Alpha-Terpinene                | NT    | NT        |
| Ocimene Isomer 1               | NT    | NT        |
| (R)-(+)-Limonene               | NT    | NT        |
| Ocimene Isomer 2               | NT    | NT        |
| Eucalyptol (1,8-Cineole)       | NT    | NT        |
| gamma-Terpinene                | NT    | NT        |
| Sabinene Hydrate               | NT    | NT        |
| Terpinolene                    | NT    | NT        |
| Linalool                       | NT    | NT        |
| (+)-Fenchone and L(-)-Fenchone | NT    | NT        |
| 1R)-Endo-(+)-Fenchyl           | NT    | NT        |
| (-)-Isopulegol                 | NT    | NT        |
| Camphor                        | NT    | NT        |
| Isoborneol                     | NT    | NT        |
| Hexahydrothymol                | NT    | NT        |
| (+)-Borneol and (-) Borneol    | NT    | NT        |
| alpha-Terpineol                | NT    | NT        |
| gamma-Terpineol                | NT    | NT        |
| Nerol                          | NT    | NT        |
| Geraniol                       | NT    | NT        |
| (+)-Pulegone                   | NT    | NT        |
| Geranyl Acetate                | NT    | NT        |
| alpha-Cedrene                  | NT    | NT        |
| trans-Caryophyllene            | NT    | NT        |
| alpha-Humulene                 | NT    | NT        |
| Valencene                      | NT    | NT        |
| cis-Nerolidol                  | NT    | NT        |
| trans-Nerolidol                | NT    | NT        |
| Guaiol                         | NT    | NT        |
| (-)-Caryophyllene Oxide        | NT    | NT        |
| (+)-Cedrol                     | NT    | NT        |
| (-)-alpha-Bisabolol            | NT    | NT        |
| Total Terpenes                 | NT    | NT        |



Chemist: EG  
Report Expires: 10/29/19

RL=Reporting Limit  
NA=Not Applicable  
NT=Not Tested  
ND=Non Detected  
TNTC=Too Numerous to Count